

Stormwater Assets
Requiring Structure
Recovery

Legend

BMP

Weir

Riser

PipeIO

Unverified Structure

Manhole

Revisit

Revisit - Traffic

Surveyed

Inlet

Revisit

Revisit - Traffic

Surveyed

Streams

OpenChannel

Pipe

Revisit

Revisit - Traffic

Surveyed

City Boundary

City Neighborhoods

City Neighborhoods

Prioritized for Ph 1a Detailed Study

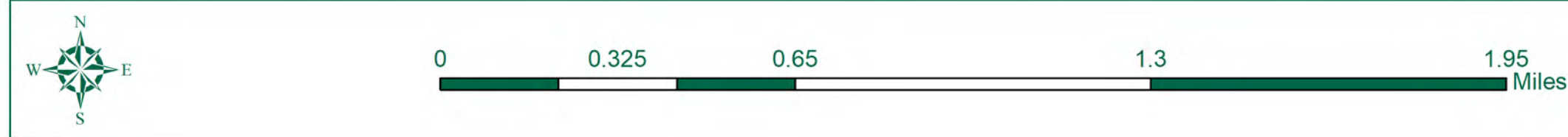
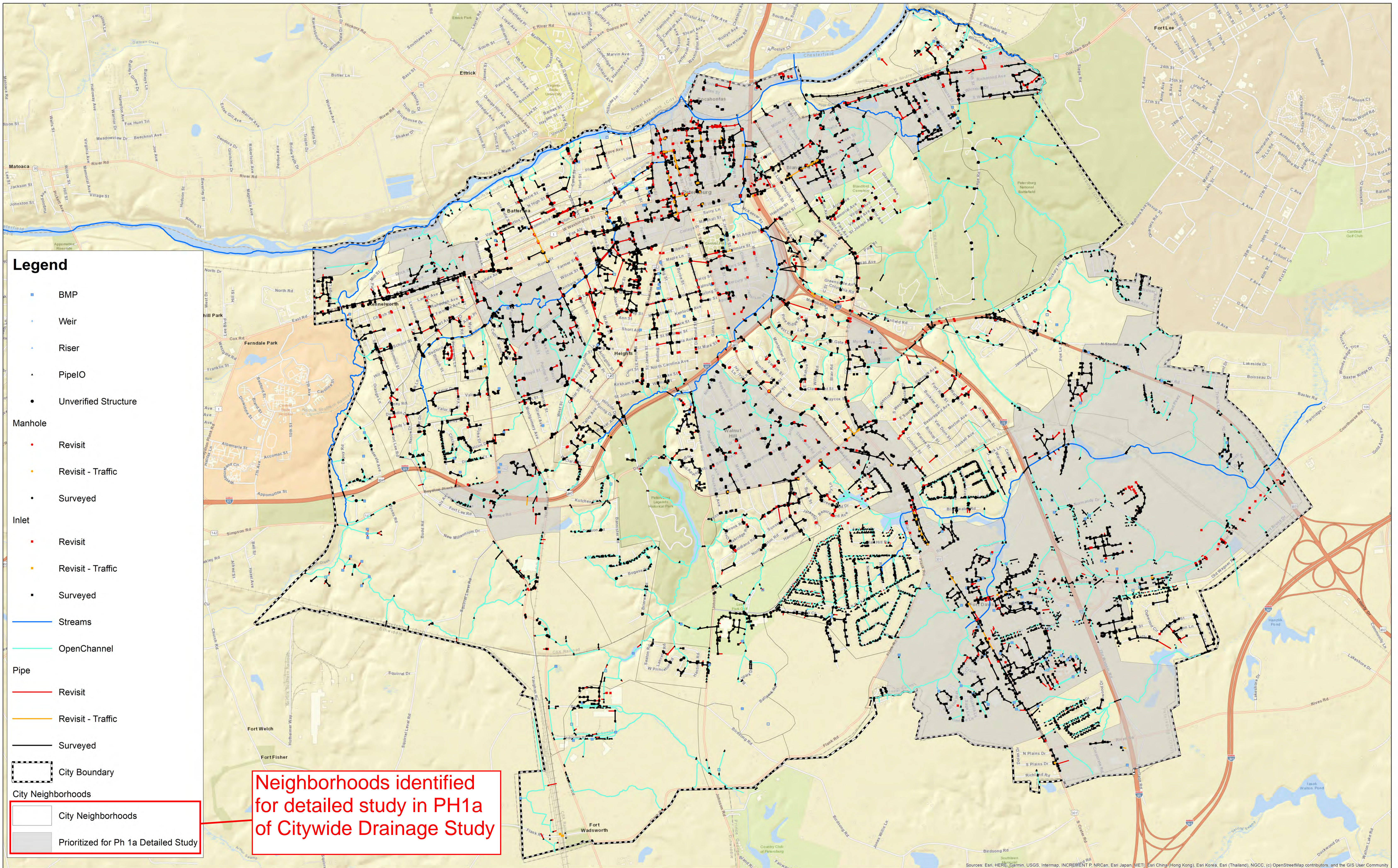
A detailed map of Fort Lee, Virginia, showing the city's stormwater infrastructure. The map includes a network of streets, water bodies, and various stormwater assets. A red box highlights a specific area in the northwest, with red lines pointing to the legend. The legend defines symbols for BMPs, weirs, risers, pipe IOs, manholes, inlets, streams, open channels, and pipes, along with their status (e.g., revisit, surveyed). It also shows city boundaries and neighborhoods, with some areas shaded gray to indicate they are prioritized for a detailed study. The map is overlaid with a grid of streets and shows the city's proximity to the James River and surrounding areas like Fort Lee and Fort Fisher.

Sources: Esri, HERE, Garmin, USGS, Intermap, INCREMENT P, NRCan, Esri Japan, METI, Esri China (Hong Kong), Esri Korea, Esri (Thailand), NGCC, (c) OpenStreetMap contributors, and the GIS User Community

A scale bar showing distances in miles: 0, 0.325, 0.65, 1.3, and 1.95. To the left of the scale bar is a north arrow pointing upwards.

STORMWATER ASSETS CONDITION ASSESSMENT

TIMMONS GROUP



PRIORITY NEIGHBORHOODS SELECTED FOR DETAILED EX. CONDITIONS STUDY